



ROHINI

COLLEGE OF ENGINEERING AND TECHNOLOGY
Approved by AICTE and affiliated to Anna University, (An ISO Certified Institution)

Architectus 22

MAGAZINE



“

we convert
dreams
into
a reality

~civil engineering”



FOUNDER MESSAGE



Shri. K. NEELA MARTHANDAN
CHAIRMAN

ROHINI College of Engineering and Technology

I am very glad to know that the students of the Department of CIVIL are bringing out a magazine to throw light on the activities and achievements of their department. Such activities among the students will enhance their communications skills, technical skills, innovative thinking and knowledge as well. RCET has made a tremendous progress in all areas crossing several milestones within a very short span of time. I feel happy to know that the students and faculty of ECE department of RCET bringing out the technical magazine Architectus 22. I congratulate the students of departments of CIVIL for taking up this task and I wish all the students of CIVIL can have a great future which is ahead.

PRO-CHAIRMAN MESSAGE



**Dr. N. Neela Vishnu., MBA., Ph.D.,
PRO-CHAIRMAN
ROHINI College of Engineering and Technology**

It is a great pleasure for me that our CIVIL Engineering department is releasing magazine "Architectus 22". As the Pro-Chairman of ROHINI College of Engineering and Technology, I feel proud about it. We have taken a path that we will develop RCET to world class standard and provide an overall development to all the students. We march towards that goal. We are happy that the students of RCET are properly shaping up, facilitating us to meet our goal. I wish all success to the CIVIL students.

MANAGING DIRECTOR MESSAGE



**Dr. V. M. Blessy Geo., MSc., Ph.D.,
MANAGING DIRECTOR
ROHINI College of Engineering and Technology**

It is a great pleasure for me that our CIVIL Engineering department is releasing a magazine. The magazine is presenting a glimpse of the growth of the institution on many fronts. The essential purpose of a magazine is to inform, engage, inspire, and entertain a diverse readership- including alumni, parents, students, faculty, staff and other friends of the college- by telling powerful stories that present a compelling, timely and honest portrait of the college and its extended family. This magazine has made an earnest attempt in this direction and brought out certain aspects of the college to the eyes of the public so that they may understand and know the college even better. The college has been simply unstoppable in its progress as it has been actively involved in various activities that have brought to light the hidden talents of the college students and staff.

PRINCIPAL MESSAGE



Dr. R. Rajesh., ME., Ph.D.,

PRINCIPAL

ROHINI COLLEGE OF ENGINEERING AND TECHNOLOGY

It is a great pleasure for me that our CIVIL Engineering department is releasing a magazine. The magazine is presenting a glimpse of the growth of the institution on many fronts. The essential purpose of a magazine is to inform, engage, inspire, and entertain a diverse readership- including alumni, parents, students, faculty, staff and other friends of the college- by telling powerful stories that present a compelling, timely and honest portrait of the college and its extended family. This magazine has made an earnest attempt in this direction and brought out certain aspects of the college to the eyes of the public so that they may understand and know the college even better. The college has been simply unstoppable in its progress as it has been actively involved in various activities that have brought to light the hidden talents of the college students and staff. The highly qualified and dedicated members of staff have always stood shoulder with the management and have carried out their duties with a level of commitment. This magazine has recorded achievements of staff members and students of CIVIL Department, competitions won by the hugely talented CIVIL students, innovative projects carried out by CIVIL students with the guidance of CIVIL staff, among others. They stand as a witness to the monumental efforts taken by the management to make the college a center of excellence in education and research. I wish the management, CIVIL staff and CIVIL students of the college success in their future Endeavor's

HEAD OF DEPARTMENT'S MESSAGE



Dr. J. SAHAYA RUBEN
HEAD OF THE DEPARTMENT
ROHINI College of Engineering and Technology

I am highly elated and proud to announce that our department of CIVIL is inaugurating the LIVIC Magazine Edition "Architectus 22". As our CIVIL department acts as a pioneering department in preparing students to completely globally in their profession and to reach the pioneer levels of intellectual attainment. I deem that the LIVIC Association and symposium will trigger the talents of the students and kindle the light of innovation and technology. It's a fact that we constant updating to establish ourselves in this revolving dynamic world. I express my heart full and sincere thanks to all conveners, colleagues and students is who are the backbone of this endowers. I am happy and wish the technical symposium as well as the release of magazine a grand success.

EDITORIAL MESSAGE

It is an occasion of immense pleasure for the Department of CIVIL Engineering to publish the magazine "Architectus 22". The Editorial board of department of CIVIL wants to thanks all the faculty members and students who have made this issue a success by providing an article. This magazine focuses on the recent trends evolved in the field of CIVIL engineering & wants to provide advanced knowledge and awareness among the students about the same. The Editorial board also wants to thanks the Management of the Institute and Head of the department for inspiring us to go forward in publishing this magazine.



Prof. N. SUTHAN KUMAR., ME.,
(Editor in chief)



Prof. A. ANANTH., ME
(Associative Editor)

Events ' 22

A National Level Technical Symposium on Livic'22

A National level technical symposium LIVIC'22 hosted by the Department of civil Engineering of Rohini College of Engineering and Technology, paulkulam,Kanyakumari, titled "LIVIC'22" was held on Friday, the 1st of April 2022.



WORKSHOP ON FORENSIC STRUCTURAL ENGINEERING

Rohini College of Engineering and Technology promotes periodical workshops for the improvement of the students. Department of Civil Engineering has organized One day Workshop on FORENSIC STRUCTURAL ENGINEERING to II nd year civil department students on 25.03.2022. The chairman Shri. K.Neela marthandan, the Pro chairman Dr. N. Neela Vishnu, the managing director Dr.V.M. Blessy geo, the principal Dr. R. Rajesh presided over the function. The Program was coordinated by Mr.C.Vinoth Kumar, Assistant Professor Civil Department. The resource person was Dr. M.Murugan, Assistant Professor, Government College of Engineering, Tirunelveli.

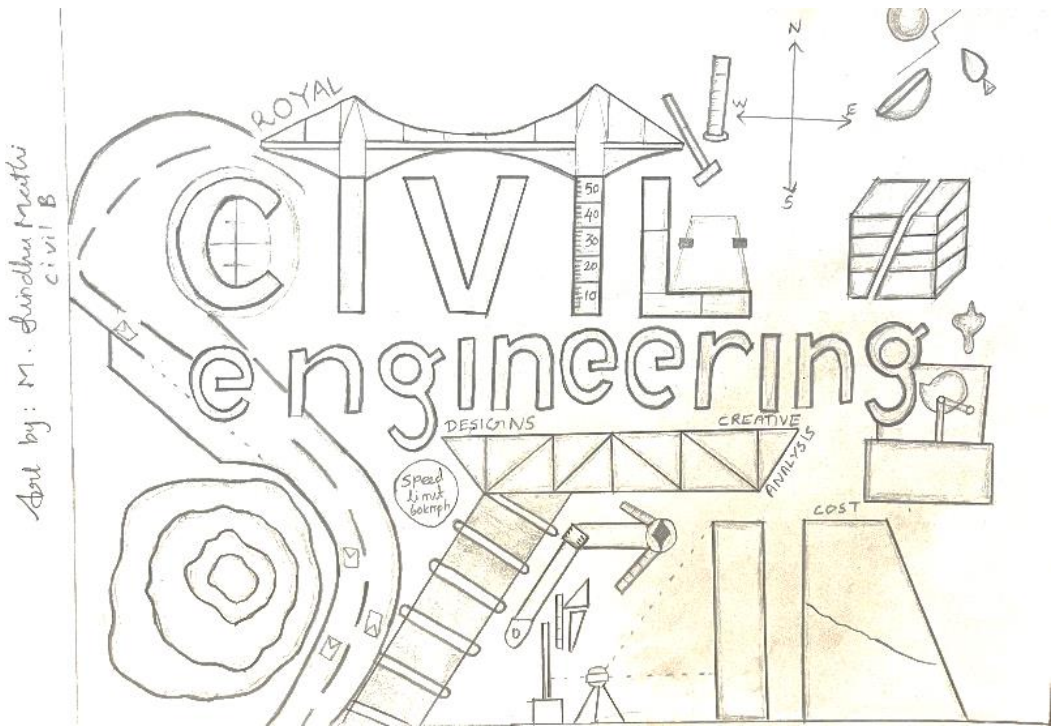


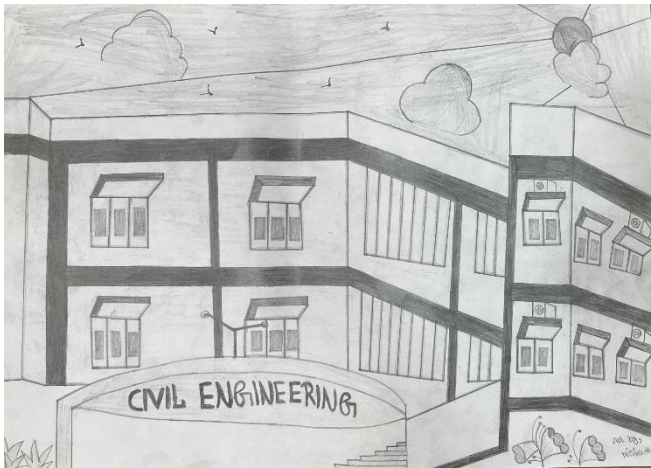
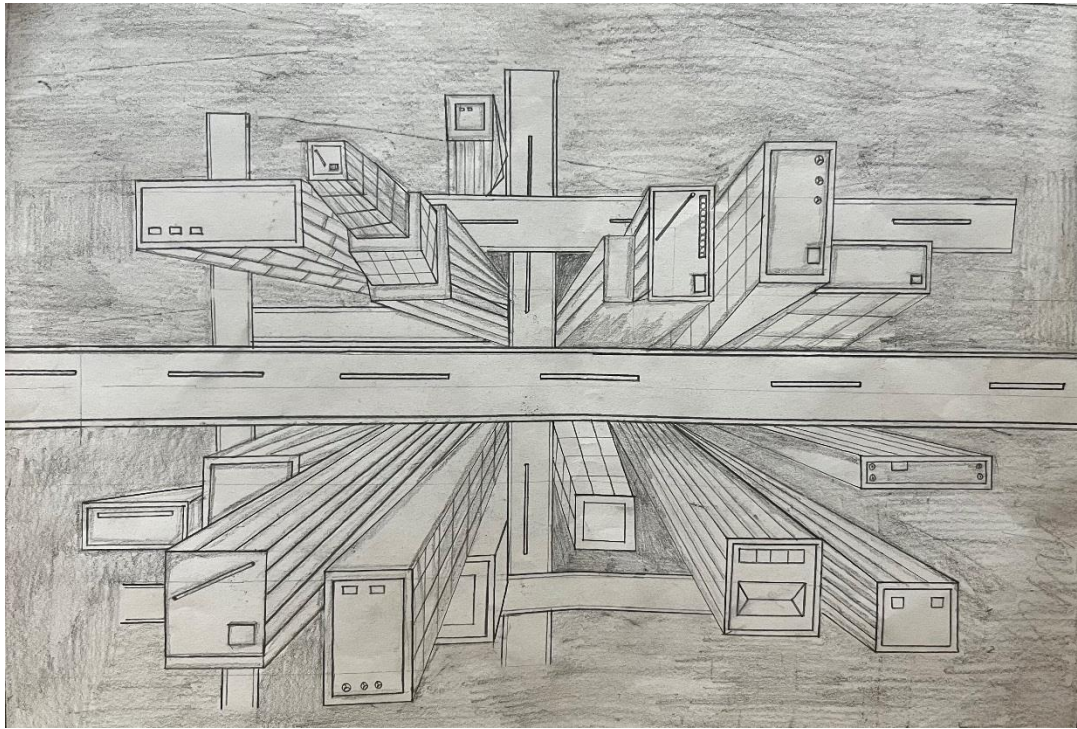
SPECTRA 2K22 AND PROJECT EXPO-2022

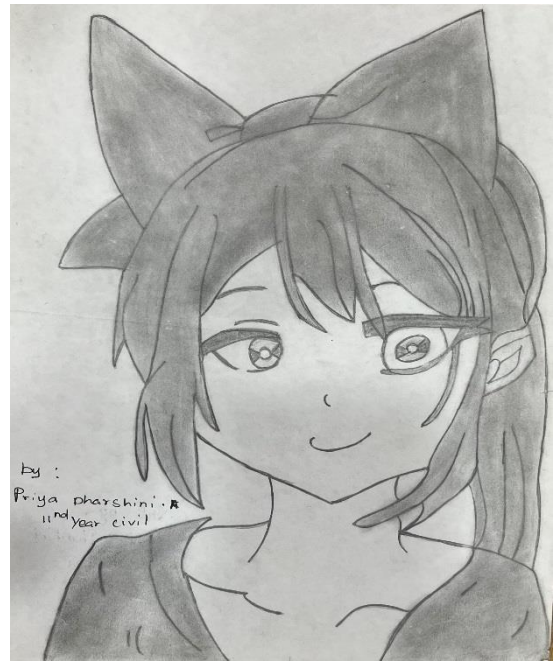
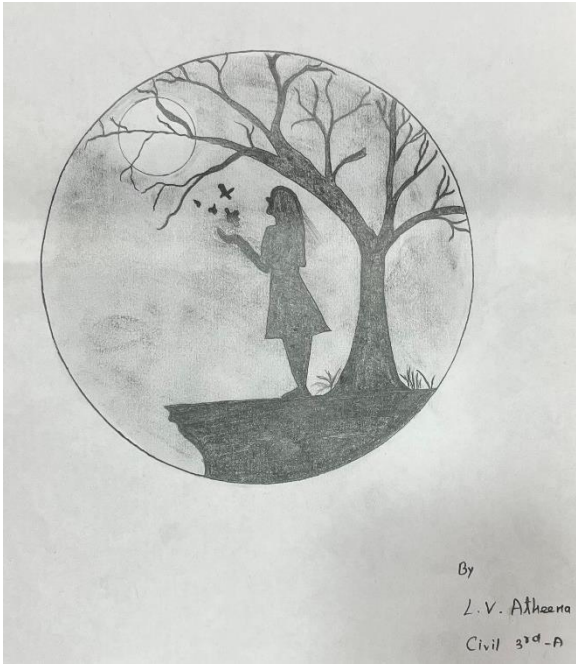
Department of Civil Engineering organised SPECTRA 2K22 at Rohini College of Engineering and Technology in Paulkulam, Kanyakumari, on Friday, September 19, 2022. The chairman, Shri. Neela Marthandan, the Pro Chairman Dr. N. Neela Vishnu, the managing director Dr. Blessy Geo, and the principal, Dr. R. Rajesh, presided over the function. The programme was coordinated by Mr. Rajiv Gandhi, Assistant Professor, Civil Department. Dr. J. Sahaya Ruben (HOD Department of Civil Engineering) inaugurated the programme. Ms. S. Meera Rakshana (IV year civil) gave the welcome speech, and M. Alfina (3rd year) introduced the chief guest. “Future journeys will be designed based on the path you choose today”, said by ‘Lion Er.P. Justin Paul, a real estate valuation expert, former District Governor, Charter Chairman, and Association of Consulting Civil Engineers (India), was the inauguration’s chief guest, and he shared his own experience as well as a recent job opportunity in the civil field. It was a wonderful experience for our students to get information about the civil industries for their future jobs.

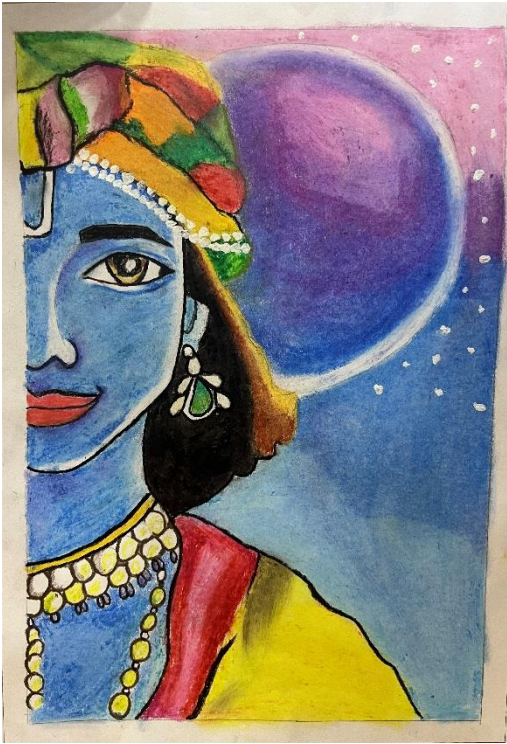


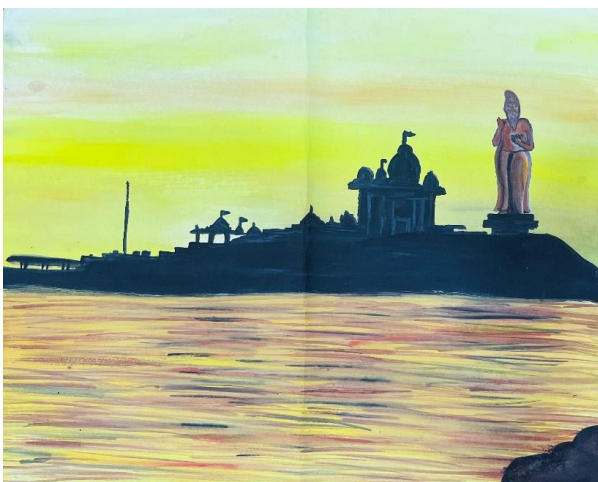
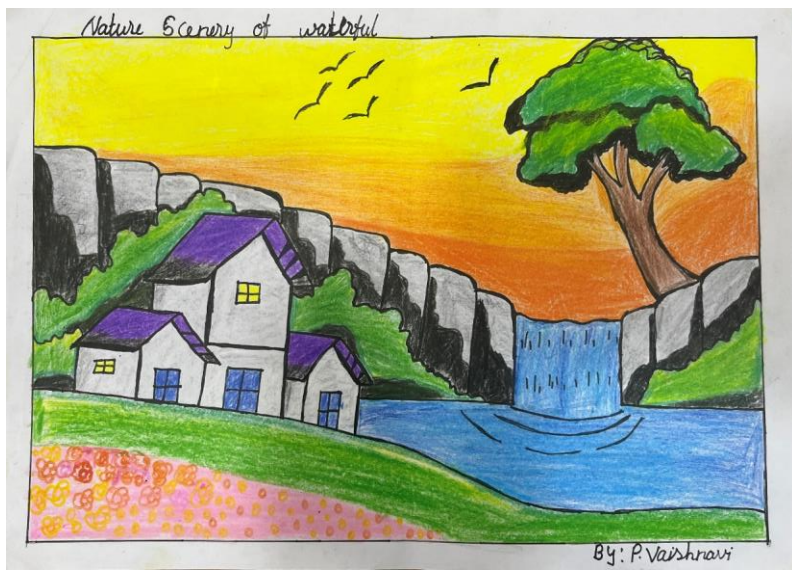
ART BY STUDENTS











Academic Achievement- Toppers

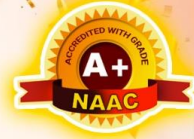
Reg.No	Student Name	GPA	SEM
963321103039	ROHIT LAISHRAM	8.8	II
963321103018	HAOBIJAM MACHALEIMA DEVI	8.6	II
963320103008	ALFINA M	9.75	III
963320103086	SEMIYA ROSE J	9.75	III
963320103004	AJITH R	9.63	III
963320103001	ABANTHIKA R	9.63	III
963320103047	KRISHNAPRIYANKA	9.63	III
963320103055	MONICA MOL M	9.63	III
963320103078	SAHAYA JEBA V	9.63	III
963320103088	SHAHEENA U	9.63	III
963320103006	AKHIN C R	9.54	III
963320103068	PRASANNA TJ	9.54	III
963320103034	JAMEELA JASEEMA A	9	IV
963320103008	ALFINA M	8.95	IV
963320103020	ATHEENA LV	8.75	IV
963320103070	PREETHIKA R	8.67	IV
963319103059	PRATHIKSHA P	9.52	V
963319103078	SHARLIN R	9.48	V
963319103092	THANGA SELVI C	9.48	V
963319103056	NISHA K	9.36	V
963319103021	ANUSHA N	9.28	V
963319103058	PRABINA M	8.5	VI
963319103092	THANGA SELVI C	8.17	VI
963319103025	ASHIKA R	8.13	VI
963319103044	KAUSALYA B	7.75	VI



ROHINI

COLLEGE OF ENGINEERING & TECHNOLOGY

Approved by AICTE and Affiliated to Anna University, (An ISO Certified Institution)
Accredited with A+ Grade by NAAC
Recognized under Section 2(f) of University Grants Commission, UGC Act 1956



Congratulations

ANNA UNIVERSITY RANK HOLDERS

April-May 2022 examinations



ABISHEKA R V
BE- Civil (12th rank)



AKSHIYA M
BE- Civil (21st rank)



ATCHAYA V K
ME- CEM (3rd rank)



BALA SOWBARNIKA P
ME- CEM (6th rank)

Our wholehearted congratulations and appreciation for your efforts to earn laurels to the college

கவிதை தூரல் மலையு

திடீரென மனதில்கூள் ஒரு படபடப்பு

ஒரு நொடி சிலிர்த்த நின்றுள்

கண்ணுக்கூள் குளிர்ந்தது

பலநாள் காணாத சூடுவரை அன்றுதான்

என் வாசலில் பார்த்தேன்

வாசலில் வந்ததும் வந்த மணம்

என் மனதில் அழகான பாரதியை

உண்பாக்கியது.

யார் என்னு தெரிந்துகொள்ள ஆவலாய்

உங்களை சிலர் நானும் சென்று பார்த்தேன்

அது என் மனதை நனைத்த

" தூரல் மலையு "

ரா. கிருஷ்ண பிசியங்கா.
B.E. III Year Civil 'A'

கல்பூரி நாடகம்

நனாதத்தல் பல கண்டு

கல்பூரிக்கிள் நனாடிக்கொண்!

எனை பாரமாய் எண்ணாமல்

அன்பாய் அருவணைந்தாய்!

நாயாய் திருந்து

உாழ்த் தகையக் கிழிந்தாய்!

உாழ்த் தகையக் பானையல்

திரு பாகங்கொண திணைந்தாய்!

கிடுள் கிழிந்த உாழ்த் தகையல்

குளியாய் உந்தாய்!

பானாஉலவலகைப் பெரல் நம்மென்று

மணையுக் கல்பூரி நாடகம்!

கிணடும் மலகொள

கிழிந்த கல்பூரி நாடகம்!!!

By:

(Handwritten signature)



புள்ளியிடுவம்

கரையிலி விழுந்து

கை காலி உகைக்கி

அமுக்கு அபகி

கண்ணிர் குழிம்ப

அப்பொலிவி அகீர்ணைய விழுக்குகொண்கி

பொக விழுப்பொலி அபம் பிறக்கி

பிரிக்கு அழைக்கி நென்று

அவ் தைக்கி கிபம்

முடிவடி வலிப்பொ

புரியாத எடுக்கி

கொரியாத முகம்

கொரியாத கிபம்

என் அகிய உலகில்

கண்ணியில் கிழிப்புகி பெரல்

கூடு கெளகம்

அமுக்கு நாண் மடலென எண்ணெண்ணி

அண்ணாக்கி பார்த்துக்கொண்

அவ் கை அமுக்கு நாண் மடலென

என் விரும்பால் கண்ணிர் கண்ணம் காண்

அமுக்கையில் கொப்பங்கியு

என் கண்ணிர் முகம் மடல்

கண்ணியில் கிழிப்புகி அகிய உலகில்

நினைவு கொண்கி உறவெண்ணி

அமுக்கிகொண்



வைகைக் கவிதை

- ⇒ வேட்டையைக் காத்தித்த
- வெறி நாயை கைப்பிடித்த
- காடகங்கள் சிவாங்கனோ
- ⇒ தீக்குச்சியை உயர்ந்தினான் சிறிதன்
- ரணினில், எரிவதை விட
- ஏற்றியது உயர்ந்தது
- ⇒ எந்த கிளி ஏமாற்றியதோ
- நாயுடன் கிடுக்கிறதே
- சீவமரம்

Submitted by
M. Alina
Civil 'A'
IIIrd year.

FUN ENGINEERING FACTS.

- ↳ The word engineer comes from a Latin word meaning is "cleverness".
 - ↳ The golf ball with dimples was designed by English Engineer William Taylor. So, that they can reduce the drag and fly farther than the smoother ones.
 - ↳ The world's tallest bridge is the Millau Viaduct in France, which stands at a height of over 1,000 feet is supported by beams and is suspended by cables.
 - ↳ The London eye in England is the largest Ferris Wheel in Europe. Standing at a height of 135 metres (442 feet).
 - ↳ Concrete is the second most consumed material on the planet by humans.
 - ↳ The Petronas Towers are a tower with the world's deepest foundation.
 - ↳ The Burj Khalifa can apparently be seen from around 90 KM away.
- Name: Jameela Jaseema. A.
B.E. III Year Civil Engineering.

The Space Needle

The Space Needle is an observation tower in Seattle, Washington, United States. Considered to be an icon of the city and the Pacific Northwest, it has been designated a Seattle landmark. Located in the Lower Queen Anne neighbourhood, it was built in the Seattle center for the 1962 World's Fair, which drew over 3.3 million visitors. Nearly 20,000 people a day used its elevators during the event.

The Space Needle was once the tallest structure west of the Mississippi River, standing at 605 ft (184 m). The tower is 138 ft (42 m) wide, weighs 9,550 short tons (8,660 metric tons), and is built to withstand winds of up to 200 mph and earthquakes of up to 9.0 magnitude, as strong as the 1700 Cascadia earthquake.

The Earthquake stability of the Space Needle was ensured when a hole was dug 30 ft (9.1 m) deep and 120 ft across, and 467 concrete trucks took one full day to fill it. The foundation weighs 5,850 short tons, the same as the aboveground structure. The structure is bolted to the foundation with 72 bolts, each one 30 ft long.

The architect of the Space Needle is the result of a compromise between the designs of two men, Edward E. Carlson and John Graham, Jr. The key leading ideas for the World Fair involved businessman Edward E. Carlson's sketch of a giant balloon tethered to the ground.

References: www.ccr.in

கவிதை : கல்வி

- உள்ள உள்ள குணப்பாடு அடைய மாந்திரம் காண் கல்வி!
- அறிவு எலும்பு மெட்டைக்கை சிறக்க உணவும் ஆடு சாந்திதான் கல்வி!
- அறியாமையை அகற்றி அறிவைக் காட்டும் அறிவு விளக்குதான் கல்வி!
- நாட்டின் மகிழ்வரிய அரங்கம் கல்வி!
- அறிவு குணம் நல்ல நடத்தை உருவாக்கிடுமே கல்வி!
- அடுகள் பல புரட்டியதால் வாழ்க்கையில் ஏற்றம் உண்டிடுமே கல்வி!
- கல்வி என்னும் அறிந்தும் நம் வாழ்வை கல்வி அறிவு பால் வளரச் செய்துமே!
- கல்வி என்பது தவம்!
- அதை கற்றியபடி வரம்!
- யார் கைவிடாதுமே கற்ற கல்வி கைவிடாது உணவு!!!

குறள்: தொட்டனைக்கு ஊரும் மணற்கெணி; மாந்தர்க்குக் கற்றனைக்கு ஊரும் அறிவு.
வினாக்கள்: மணற்கெணி தொண்டிய அளவின்குநீர் ஊரும்; அதுபோல் மக்களுக்கெக் கற்ற கல்வியின் அளவின்கு அறிவு மெடுமும்...



FACTS ABOUT CIVIL ENGINEERING	MYTHS ABOUT CIVIL ENGINEERING
17.2% of civil engineers are women	it's a man's world
it's more problem-solving	you have to be good at math
engineers are the most creative people	engineers aren't diverse

BURJ KHALIFA, UAE

constructorsfeed.com



- Tallest building in the world which is 3 times taller than Eiffel tower.
- Total aluminum weighs as much as 5 A380 aircraft.
- Total concrete weighs as much as 100,000 elephants.
- 22 million man-hours
- 55,000-ton steel rebar
- 110,000-ton concrete
- Can be seen without binoculars till upto range of 95 kilometers.
- Tallest elevator in the world.

Civil Facts



The 1.7-mile-long Golden Gate Bridge, an icon of the San Francisco Bay region, connects the city of San Francisco to Marin County, California. At its completion in 1937, the suspension bridge was considered an engineering marvel—the longest main suspension bridge span in the world.

Civil Facts



Tehri Dam is the third tallest rockfill dam in the world, and the largest in Asia involving placement of over 25 million cum of all types of fill material.

ABOUT TAJ MAHAL

Taj Mahal was built in the memory of Mughal Emperor Shah Jahan (from reign 1628 to 1658) in the memory of his wife Mumtaz Mahal, the construction work of the Taj Mahal began in 1632. Shah Jahan wanted the world to remember Mumtaz and his love story, that is why he wanted to make some historical heritage in his memory. In which Taj Mahal was built The construction of the Taj Mahal was completed in about 1643 but still to enhance its beauty and work up to 10 years. The construction of the Taj Mahal was completed in about 1653 and at that time the cost was approximately 32 million rupees, the construction of the Taj Mahal was done by 25,000+ craftsmen. Ustad Ahmad Lahauri is often regarded as its chief architect.



TOI

CHENAB BRIDGE
WORLD'S HIGHEST
RAILWAY BRIDGE

RAILWAY BRIDGE

12 skyscrapers are the world's tallest buildings

Burj Khalifa in Dubai, United Arab Emirates



Merdeka 118 in Kuala Lumpur, Malaysia



Shanghai Tower in Shanghai



Makkah Royal Clock Tower in Mecca, Saudi Arabia



Ping an Finance Center in Shenzhen, China



Lotte World Tower in Seoul



One World Trade Center in New York City



Guangzhou CTF Finance Center in Guangzhou, China



Tianjin CTF Finance Center in Tianjin, China



Taipei 101 in Taipei, Taiwan



Shanghai World Financial Center in Shanghai (China)





CIVIL

YOU DREAM IT WE BUILD IT

UG Courses

- ✓ B.E - Civil Engineering.
- ✓ B.E - Computer Science and Engineering.
- ✓ B.E - Electrical and Electronics Engineering.
- ✓ B.E - Electronics and Communication Engineering.
- ✓ B.E - Mechanical Engineering.
- ✓ B.E - BioMedical Engineering.
- ✓ B.Tech - Agricultural Engineering.

PG Courses

- ✓ M.E - Communication Systems.
- ✓ M.E - Computer Science and Engineering.
- ✓ M.E - Construction Engineering and Management.
- ✓ M.E - Thermal Engineering.
- ✓ M.E - Applied Electronics*
- ✓ M.E - Manufacturing Engineering*

Management Programme

- ✓ Master of Business Administration

Research Programme

- ✓ Ph.D in Mechanical Engineering.

Become a Student at RCET

- ✓ Online Application Form
- ✓ Eligibility
- ✓ Download Brochure

DEPARTMENT OF CIVIL ENGINEERING